

Cardinal Langley RC Sixth Form



'Continues to be a Good school'

Ofsted, May 2022

Prospectus

Year 12 2023 Entry



Ofsted
Good
Provider

'Inspired by Faith, Education leads to Progress'

Cardinal Langley RC High School Mission Statement



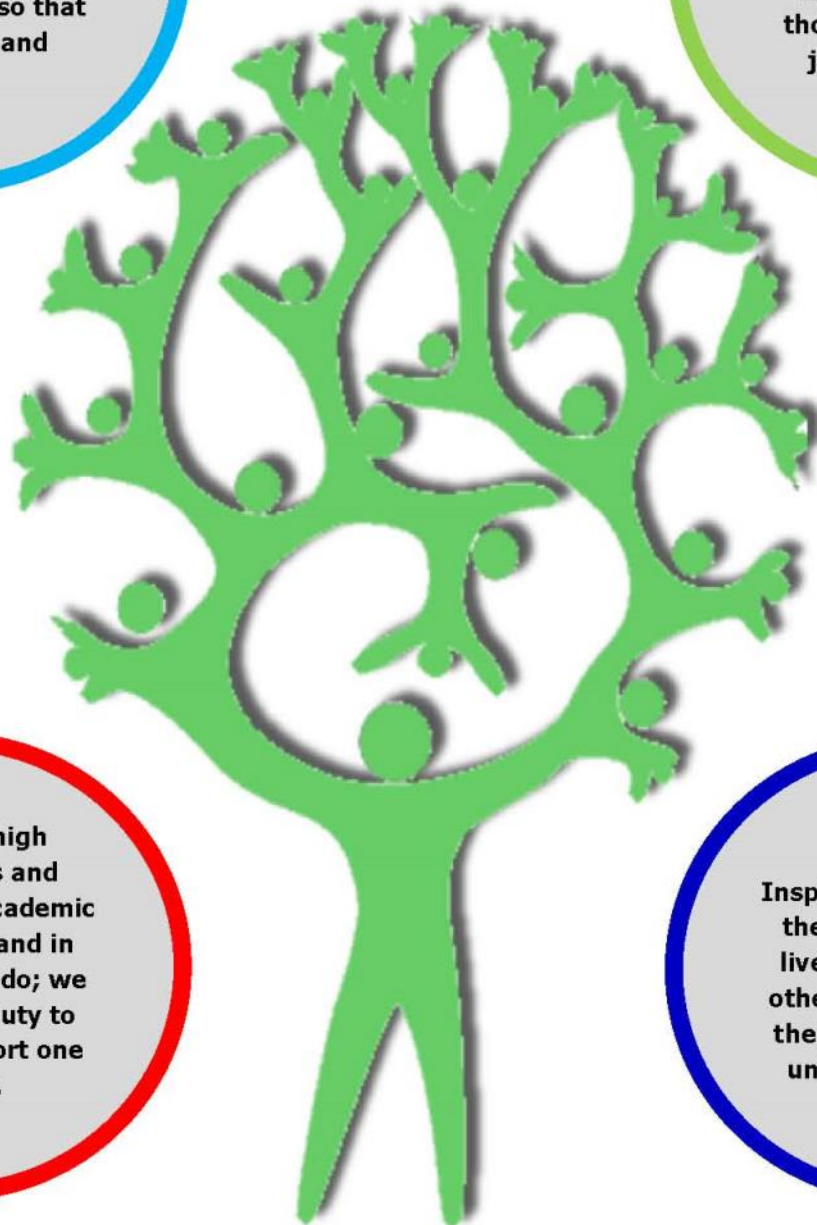
I have come that they may have life and have it to the full. John 10:10



Living the values of:
love, respect,
forgiveness,
compassion, honesty,
fairness and
responsibility, so that
all feel safe and
valued.

Striving to recognise,
value and respond to
the needs of all, so that
they may take their
place in modern society,
acting justly, loving
tenderly and walking
humbly with God.

Celebrating the
presence of God, the
talents and abilities of
all and supporting
those in need as we
journey in faith.



Promoting high
expectations and
excellence in academic
achievement and in
everything we do; we
see it as our duty to
care and support one
another.

Inspiring children with
the Word of God, to
live in the service of
others and to develop
their full potential as
unique individuals.

Rooted in Christ and in the tradition of St Jean Baptiste De La Salle, Cardinal Langley is a school community in the Diocese of Salford where the Catholic faith is taught, lived and celebrated, so that all may have life and have it in abundance. It is our mission to educate the whole person in the footsteps of Jesus Christ.

Contents

Welcome	4
Why Choose Us?	5
Students' Achievements	6
Here For You	8
Personal Development	10
The Sixth Form Community	11
Enrichment	12
Sixth Form Gallery	14
Careers Support	16
Choosing the Right Course	18
Course Information	19
Pathways	20
Entry Requirements	21
Courses & Options	22
Application Process	50
Your Potential Course Options	51
Notes	52
Structure of the Day	53
One Last Message	54
How to Find Us	55



Welcome

I am delighted that you are considering Cardinal Langley Sixth Form as a place where you can study and excel after completing your GCSE qualifications. In this prospectus we have tried to capture everything we offer young people looking to make their next steps in life - from a wide range of courses, to the vibrant atmosphere and fantastic personal support.

We have a clear and distinctive mission at Cardinal Langley Sixth Form and our organisation is built on a strong foundation of values and ideals.

Study with us and you will find support and challenge in equal measure. We will respect you as an individual, giving you the responsibility to make your own choices, together with the help you need to excel both academically and personally. We make sure our students aim high whilst keeping their feet on the ground.

We understand that everyone has different needs and strengths so we design our curriculum to enable you to achieve success in the next stage of your journey. Whatever your future holds; university, apprenticeships, employment, we will get you there.

I am extremely fortunate to work with a truly exceptional team and it is because of their efforts that we have such impressive results. I am proud to

be Head of Sixth Form at Cardinal Langley and to be working with such an experienced, dedicated and supportive Sixth Form team.

You have some important decisions ahead of you and I completely understand that it can be daunting but we are here to help you. We are more than happy to answer any questions you may have to help you with your next steps.

Good luck in your GCSEs and I look forward to welcoming you at Cardinal Langley Sixth Form in September.

Mr Andrew Greaves (Head of Sixth Form)

'Students in the sixth form are fully involved in all aspects of school life. They take pride in the work that they do. For example, students in the sixth form support younger pupils by becoming 'guardian angels'.

'Leaders ensure that careers guidance is well established across the school. All pupils move on to appropriate, high-quality destinations at the end of their time at the school. Many students in the sixth form progress on to apprenticeships and university.'

Ofsted, May 2022



Why Choose Us?

Our Promise

When it's time to make important decisions about your future, Cardinal Langley offers a reassuring choice.

With an open and welcoming approach, we're a college with real warmth and personality, ready to support you through a vital time of your life.

Everything we do starts with our students' needs.

We make sure that every student has strong roots *and* high aspirations.

We stand out because we base our work around a strong ethos of care and respect.

Exceptional Pastoral Support

Our outstanding pastoral support is what sets Cardinal Langley Sixth Form apart from other sixth forms. We have a dedicated Sixth Form team that will ensure you will receive the personalised help you need to succeed. Meet our Sixth Form Ambassador, Mrs Farrell, below.

We pride ourselves on building good working relationships with parents and carers, so that together we can ensure each student makes good progress, gains confidence, and achieves both academically and socially.

Cardinal Langley Sixth Form is renowned for its outstanding pastoral support. My role allows me to run an open door policy, and you can be assured that you will always have someone to speak to on a daily basis. Your social and emotional wellbeing is my number one priority. In order to achieve your academic potential, it is paramount that your emotional needs are catered for. Therefore, I will provide ongoing pastoral support and guidance in the following areas:

- Confidential consultations
- Removing barriers to learning
- Liaison with subject teachers
- Support with attendance and punctuality
- Advice on mental health and emotional wellbeing



Information, advice, guidance and confidential support in a safe environment will be provided to ensure that you are able to manage the changes that come with the transition to Sixth Form. I am privileged in my role as I am able to build one-to-one relationships with all students which allows me to provide a bespoke package of support that meets the specific needs of each individual. I look forward to supporting you during the next stage of your academic journey, developing self confidence and self belief to achieve your full potential. **Mrs Farrell (Sixth Form Ambassador)**

Students' Achievements

Cardinal Langley's Sixth Form students have, yet again, excelled at A Level and vocational courses with the vast majority now moving on to their first choice of university. Teachers were delighted to congratulate students, not simply on their academic achievements, but also for making it through an incredibly tough two years. This year's results are particularly impressive considering students were unable to sit GCSE exams in 2020 and so this summer's exams were the first external assessments taken.

Mr Bridson, Headteacher, said, "On behalf of all the teachers here at Cardinal Langley, I would like to extend our congratulations to our students. They have worked tirelessly, as have staff, and we are privileged to have known each of them. Their excellent outcomes reflect their commitment and resolve and there is no greater reward than to see our students progress on their desired pathways."



Elise achieved two A* and two A grades. Elise said, "I am so happy and grateful to Cardinal Langley for all of the helpful support."

Elise will be going to Manchester University to study maths.

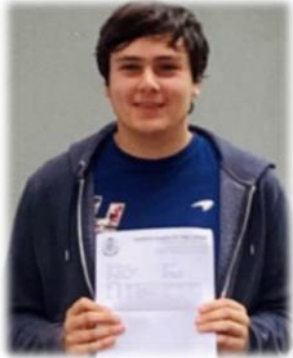


Annabel achieved an A*, two As and a B grade, and is looking forward to studying history at Sheffield University. She said, "I genuinely wouldn't be who I am without this school."



Matthew was very pleased with his two A grades and a B. He is looking forward to starting his apprenticeship in surveyance at Harper Adams University in Shropshire.

Thomas was very happy with his achievements - two grade As and a B! He said he is “excited to start a new chapter of my life,” which will be at Leeds University studying aerospace engineering.



Lucy achieved two A*s and an A is looking forward to studying politics at Durham University whilst Anastasia achieved two As and a B, and is off to Sheffield University to study history.
Olivia achieved an A*, A and B, and will study economics at Manchester University.
Nieve achieved three Bs and will study primary education at Edge Hill.

Exam Performance – Summer 2022

CARDINAL LANGLEY RC Sixth Form

Cardinal Langley Sixth Form continues to compete with the best for student progress:

- 99.3% pass rate at A Level with the average grade per entry of a B-
- 53% achieving A to B at A Level
- ALPS Band 3 (Top 25% Excellent) provider for A Level
- 71% achieving Distinction / Distinction* in vocational subjects
- ALPS Band 4 (Top 40% Very Good) provider for Applied General
- 100% of the 2022 cohort went on to gain a place at university, apprenticeship provider or went straight in to employment.

Here for You

Values for Living

As part of being a student with us you will access high quality values-based education lessons through Core RE. With one lesson every two weeks, it's a chance to discuss ideas and explore your values. This course is designed to encourage you to make a positive contribution to the community and you will learn about how you can make a difference in the local, national and international sectors. As part of this, all students will take part in the Lasallian Leadership Award. Our college has its roots in the life and work of St Jean Baptiste De La Salle, the patron saint of teachers. You will learn about what it means to be a Lasallian Leader and, over the course of two years, develop essential leadership and self-management skills that will serve you well in the next stage of your educational journey.

'Example makes a much greater impression than words'

Jean Baptiste De La Salle

Supporting your Progress

We have a system of ongoing regular assessments and reviews which help you to understand your progress. The Student Leadership Team will talk to you about your grades regularly which will reflect how you've progressed since your last review. You will have an active role in the process with time set aside for you to review your progress with the Sixth Form specialist staff.

Putting a Smile on Every Student's Face

Moving to Sixth Form is an exciting time, with important decisions and new responsibilities. It can be daunting too. We are here to help.

However, we offer all the individual support you need, ensuring that you flourish and achieve your full potential during your time with us.

Structure for Support

Helping young people learn how to be more independent is a fundamental part of our role.

It's vital that our students take responsibility for their own progress if they are going to find success at university or in a job. We provide a very supportive environment, with close monitoring and easy access to expert guidance.

Supporting your Vision

At Cardinal Langley, we want you to achieve both academically and personally. We understand that every student is different and, as a result, the support you gain throughout your studies is tremendous. Our Student Leadership Team, the Sixth Form Ambassador, Sixth Form Tutors and specialist teachers will all help make your college experience as smooth and as exciting as it can be.

Equality and Diversity

We are fully committed to ensuring that all students achieve their full potential in a safe and welcoming environment. Promoting equality and celebrating diversity are central to our core values. The Sixth Form team is dedicated to ensuring that equality, diversity and inclusion is fully embedded into all college practices.

Imagine your Future

We encourage all students to plan for their future. At Cardinal Langley Sixth Form, you will have continuous dedicated and excellent support as well as advice around career planning and / or your application to Higher Education through our Next Steps Programme.

We are passionately driven as a team to give you all the support and guidance you will need to make the right choices for your future.

Financial Support

We recognise that supporting students financially through post-16 education can be difficult for a number of families. We therefore offer financial support through the 16-19 bursary scheme to support students with their educational needs. Entitlement to the bursary is linked to household income, benefits received, or any form of financial hardship.

Opportunities to Stand Out

Although they are important, it takes more than a qualification in order to be successful. There are many opportunities throughout your college experience with us which will help you to achieve your goals and stand out from your peers when it comes to your university or apprenticeship applications.

Personal Development

At Cardinal Langley we encourage our students to rise to new challenges. We want you to enjoy fresh experiences and learn new skills that will stand you in good stead in the future. Alongside academic work, we want you to become well rounded young adults. Just as importantly, we want you to be happy during your time with us, have fun, and develop interests and build friendships that will stay with you well into your future.

Our Student Leadership Team wanted to tell you about a few opportunities that they have had whilst attending Cardinal Langley Sixth Form:

Ambassadors

Many of our students choose to become mentors to pupils in the main school. As part of the Cardinal Langley Ambassador Programme, Year 12 and 13 students are involved in the highly successful and enjoyable Paired Reading and Guardian Angels Ambassador Programmes.

Nuffield Bursaries

Each year those students interested in STEM subjects can apply for a Nuffield Trust research placement where they can spend a portion of their summer working alongside top professors at a local university. The students can take on their own STEM project in a field of their choice with the help of a one-to-one supervisor who will guide them along the way. The scheme is a chance for students to experience what it might be like to go onto a career in research and they come out of it, not only with an impressive project to talk about in their personal statement, but also with a wider understanding of a subject that they might go onto study further in the future. Through Nuffield I have gained invaluable skills that I know will be useful when I go on to study at university.

Student Leaders

At our Sixth Form, we utilise our small size to ensure that everyone gets a say in the way it is run and this is made possible by our Student Leadership Team. Each year a group of students are chosen to represent their year group and to bring forward ideas that will help improve their Sixth Form experience. As part of the Leadership Team we are given the opportunity to fundraise for causes that are close to our hearts, such as our yearly OAP Christmas Party, which is such a personal experience that would be difficult to recreate elsewhere.

Lasallian Award

As a Catholic school, we continue RE into Sixth Form with lessons once a fortnight. In order to allow us to take an active role in following the Lasallian way of life, an award has been created to acknowledge the actions that we take to help others both within and outside our community. The award is split into Bronze, Silver and Gold, and means that we can take time away from the stress of A Levels to focus on something that will help shape us as people, rather than to simply aid our academics.

D of E Silver Award

I have found that The Duke of Edinburgh Award has been a wonderful opportunity to give back to my local community by volunteering as well as improving on a skill you might have. It is a challenging yet highly enjoyable experience that is completed with an expedition to North Wales - a weekend which you'll never forget!

Social Mobility Foundation

For those whose parents did not attend university or have other circumstances that might put them at a disadvantage when applying to university, the SMF is a great scheme that students can sign up for to receive some extra support. Through attending various meetings and online sessions, SMF has ensured that I have been given the same chance at succeeding when I leave school, regardless of what kind of Sixth Form I have attended. I now know that I shouldn't be afraid to aspire to study at some of the top universities in the country and the SMF has helped with this immensely.

The Sixth Form Community

A Message from the Student Leadership Team

Cardinal Langley Sixth Form inspires its students to go above and beyond what they are capable of achieving through its amazing sense of community, as well as its wonderful Sixth Form team, whose constant dedication and support allows their students to thrive. This prepares them for what comes next and helps them to decide which individual path they want to take in life.

One of the most appealing things about our Sixth Form is the fact that its small size creates such a close community feel, making it feel just like a family. This means that despite how huge the initial jump from GCSE to A Level might seem, you will soon settle in and won't have to go far to seek out support, whether that be from the Sixth Form staff or equally, fellow students. We have a committed Student Leadership Team who strive to create the best learning environment possible - not only for current students but also for those in years to come.

As a senior member of the Sixth Form Leadership Team, I can honestly say that my time at Cardinal Langley has enriched me not only academically, but as a whole. I have grown so much during my time here and have been given so many opportunities to help me reach my own personal goals - many of which I may not have had the chance to make the most of, had I attended Sixth Form elsewhere.

Aspire Group

The students in our Aspire Group represent the top percentage of our achievers who show aspirations of progressing on to Oxford, Cambridge and other Russell Group universities.

Those aspiring to a career path in Medicine, Veterinary Science and Dentistry do extremely well on the Aspire Programme.

The Aspire Programme guides and stretches our most able learners, promoting an aspirational culture.

Leadership Opportunities

All students are given the opportunity to excel, to consolidate their strengths and follow their passions.

We encourage all our students to develop as leaders, to have a sense of responsibility and team spirit, qualities which are invaluable in future life.

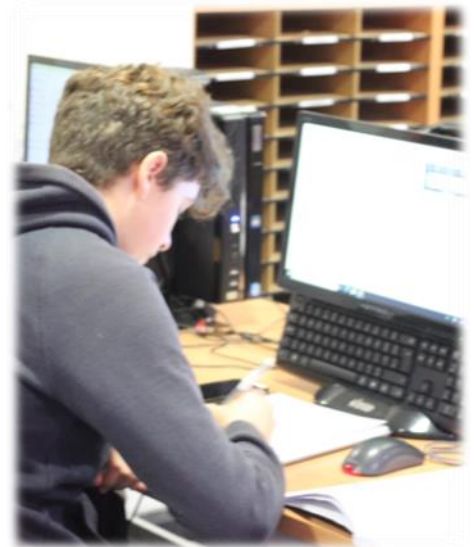
As ambassadors for the school, our Sixth Form students are frequently called upon to play a pivotal part in the daily life of the school. This involves input into the school garden being Green Leaders, Guardian Angels and Reading Ambassadors, and organising charitable and fundraising events.

By taking part in a wide range of experiences, students at Cardinal Langley develop personal qualities, skills and the ability to manage themselves and lead others.

Expectations

Cardinal Langley Sixth Form has high levels of expectations for both teachers and students.

We expect students to be organised, punctual, smart in appearance, ready for work, and proactive in exploring everything that the Sixth Form has to offer. Your form tutor, together with subject teachers and the Sixth Form team, will guide and support you in a relationship that is a partnership, with a shared focus on success. All of this underpins students' outstanding achievement.



'Cardinal Langley makes you independent. You are given both the encouragement and freedom to develop as an individual, to take ownership of your learning and this is always backed up by the support, advice and guidance from The Sixth Form Team.'

Enrichment

As a Sixth Former at Cardinal Langley, you'll have the opportunity to get involved in our enrichment programme. This is filled with extra-curricular activities (some of which are listed on the next page) that are aimed solely at Sixth Form students.

We put a lot of emphasis on the importance of our enrichment programme as involvement in these activities can aid university and apprenticeship applications, whilst giving students the opportunity to experience things they otherwise might not do.

The enrichment opportunities will mainly run on a Wednesday afternoon and give students the chance to meet and interact with new people. There is flexibility in terms of what we are actually able to provide, but the page opposite details just some of the activities students have experienced at Cardinal Langley Sixth Form in the past.

There is more to life at Cardinal Langley Sixth Form than studying for a qualification. Your potential for achievement isn't limited to the classroom.

That's why we encourage our students to get involved in our enrichment opportunities.

The breadth of extra-curricular enrichment activities offered at Cardinal Langley will provide various opportunities for you to excel and succeed.

If there is anything you would like us to run, just come and talk to us. If we can make it happen, we will!





Sixth Form Gallery



Curry Night - Social Evening



Alton Towers



OAP Christmas Party



Guardian Angels



London Trip



Edge Hill University Trip

Sixth Form Gallery



Duke of Edinburgh - Silver



Football



UCAS / Apprenticeship Show



Student Leadership Team



Anti-bullying Disco for Year 7s



Green Leaders

Careers Support

With Sixth Form being such a pivotal stage in your education, we dedicate a lot of time and effort into helping you understand the options available to you when you finish Year 13. All students are encouraged to apply to university as the preparation and application process gives you invaluable experience for other types of applications.

Throughout your two years with us, you will explore the exciting possibilities for your next step with a number of events and activities where you can find out more.

Whatever your chosen path we will offer you the necessary support, advice and guidance to ensure that you are able to plan carefully for your future. The vast majority of our students go directly to university, but as Degree Apprenticeships also become a potential means of moving into your chosen career, we will encourage you to explore all available options. This will include considering the value, advantages and disadvantages of all routes, which will mean that you take responsibility for making your own decisions about your future.

Next Steps Programme

In addition to regular events and information sessions throughout the year, Year 12 and 13 students will be provided with high quality, intensive information and guidance regarding a range of issues about life beyond Sixth Form over a two-day period. This includes visits from a range of universities and apprenticeship providers, covering topics such as:

- The application process to university
- Student Finance
- Living away from home / choosing accommodation
- Choosing a university and course
- Personal statements, cover letters and CVs
- The realities of a working life after education

Alongside this, we will also hold a Financial Support Evening in September for students and their parents, who are thinking of going to university, to ensure you have the most up to date information needed to help you make an informed decision about the future.

Work Experience

In the Summer term of Year 12, students are given the opportunity to complete a week's work experience.

It is the student's responsibility to take ownership of this process although guidance will be provided by tutors and members of the Sixth Form team.

Students should begin contacting potential placements as early as September in Year 12 and aiming to find experience directly linked to their interests which will stand out on application forms and UCAS personal statements.

Please note, additional hours at a student's part-time job are not considered to be valuable work experience.



Positive Steps – Our Careers Service

At Cardinal Langley Sixth Form, we aim to give you as much careers advice and support as we possibly can. Students in our Sixth Form have a dedicated Careers Adviser, Mrs Cherry Hughes, who is available to help all Sixth Formers to make informed decisions about their future, whether that is university, apprenticeships or employment. Students are able to make appointments with Cherry to fit in around their timetable as and when they are required. At such appointments, students will benefit from guidance and advice from a very experienced member of our team so that they are able to go on to make good choices about their future.

University and UCAS

A high percentage of our students apply to university through the UCAS system in Year 13. The application process begins at the start of Year 12 during our 'Next Steps' programme and continues throughout Year 13. Students get time and support to complete this process, especially in relation to the writing of their own personal statement that is sent off to the different universities that they apply to. Although students can find this quite challenging initially, our team of experienced tutors will be on hand to provide guidance and support to ensure our students ultimately put together a statement that gives them the best possible opportunity of being offered a place by the different university admission tutors. Our tutors will also write a supporting statement for each student as part of their application. Our team has many years of experience of doing this, thus increasing the chances of students achieving offers of places at many of the different universities that are applied to. Prior to this we attend the UCAS Convention in Manchester where university and apprenticeship providers exhibit a variety of stalls providing lots of information. Alongside this, students are actively encouraged to attend university open days.

There are links on our website to support you in this process: sixth.clrchs.co.uk/parentsstudents/ucas

Not Going to University?

For students not intending to apply for university, support and guidance about preparing for, and the suitability of apprenticeships and employment opportunities, will be provided through our careers advisor (Cherry Hughes), Mrs Farrell, Mr Greaves, Mr Gillespie and the Sixth Form tutors. Regular job vacancies and apprenticeship opportunities will be promoted via email and the Study Room notice board. There will also be opportunities throughout the two years to attend various conferences, such as: the Careers in Investment Management Insight Conference where students will hear about careers and make key links with local CISI member firms, including; AJ Bell and Barclays Bank.

There are links on our website to support you in this process:
sixth.clrchs.co.uk/parentsstudents/apprenticeships



'I have received so much support over the past two years and I cannot thank the Sixth Form team enough. They have well and truly prepared me for the future. I don't know where I would have been without them.'

Choosing the Right Course

What are the Options at Sixth Form?

At college, you will study A Levels or Applied General courses (or a combination of both).

You choose **three*** subject options:

- One A Level is one subject option.
- Applied General courses are equivalent to one subject option.

From the moment you apply, right through to when you join us, we'll work with you to ensure we guide you onto the appropriate courses that suit your career aspirations.



A Levels

Short for Advanced Level. We offer a wide range of A Level options (more information can be found on pages 23 - 49); some will be subjects you've studied at GCSE and some will be new. A Levels are highly valued by universities and employers so they can open doors to further study and careers. All A Levels are assessed by exams at the end of the two year course and are graded A* to E.

Applied General

An alternative to A Levels, Applied General courses are more vocational and can be useful if you know what career you're working towards. Unlike A Levels, Applied General courses are continually assessed throughout the two year period with a combination of coursework, practical projects and exams. Applied General courses are awarded: Distinction* (A*), Distinction (A), Merit (C) or Pass (E) and they are accepted by universities depending on which course you choose.

Which course should I choose?

Think carefully about your interests and plans after leaving college, and choose the courses which will help you to achieve this goal. For example, if you were thinking about applying for a university course in a particular subject such as Medicine, then this will mean that you would need to choose certain subjects - in this case Biology and Chemistry. For many Higher Education courses the exact choice of course is not too important but it is always worth talking this through with the Sixth Form team. If you don't have a specific career goal at the moment, then there is nothing wrong in choosing subjects which both interest you and which you think you will do well in.

in individual cases, some students are able to choose **four subject options*

Course Information

The Sixth Form Study Programme

Our aim is to ensure that all our students realise their true potential and are able to secure coveted places in the highly competitive world of Higher Education, apprenticeships and employment.

Entry Requirements

At Cardinal Langley we have an entry requirement that prospective students must fulfil in order to successfully enrol with us.

Our entry requirement is a minimum of five standard passes at GCSE (9 - 4) in five different subjects (only one BTEC will be considered), with at least one being GCSE English or GCSE Maths.

Please note: we are unable to offer you a place if you need to resit both GCSE English and Maths.

Guiding You to Make Good Choices: Our Pathways

When you choose to enrol with us we understand how important it is that you make the right choices in terms of what subjects to study. We know this can be difficult, and, if done badly, have a range of consequences that can result in you under-performing or leaving before the end of Year 13. This is something we do not want to happen. Therefore, as you enrol, we have decided to give you a bit more help when you make your choices through our **pathway system**.

Your pathway is calculated by how well you perform in your Summer GCSE examinations. We look at the numerical grades that you have achieved alongside one vocational qualification that you have completed and place you in one of four pathways. Ensuring that you are on the most appropriate pathway and the right combination of courses is key to being successful during your Sixth Form education.

The table on the next page shows you what combination of A Level and Applied General courses we recommend you study based on the grades that you have achieved in your GCSEs.

Study Requirements

For each course (subject) you are studying you will be in class with your teacher for almost 9 hours over a two week cycle. In addition to this, you will be expected to complete an additional 9 hours per subject outside of the classroom on independent study tasks, such as homework or revision.

One thing to remember is that the 9 hours independent study time is per subject; therefore if you are doing three A Level subjects you will be expected to carry out 27 hours of private study in your own time over the course of the two week timetable.

Pathways

Pathway	Study Programme	Minimum GCSEs	Grade Profile	Additional Requirements
1	4 A Level courses. with a focus on “facilitating subjects” (F) for Russell Group Universities (Maths, English Literature, Physics, Biology, Chemistry, Geography, History & Languages).	SIX 9-7 GCSE grades. No alternatives to GCSE accepted.	At Least THREE 9-8's in your top 6 grades. With this profile you would be strongly encouraged to study 4 A Level courses (or equivalent) and continue all 4 through to the end of your second year.	Both GCSE English and Maths grade 4 or above. Individual course requirements must also be met.
2	3 A Level courses.	SIX 9-5 GCSE grades. No alternatives to GCSE accepted.	At Least THREE 6's in your top 6 grades. With this profile, you would study 3 A Level courses (or equivalent) and continue them all through to the end of your second year.	Both GCSE English and Maths grade 4 or above. Individual course requirements must also be met.
3	2 A Level courses. + 1 Vocational Level 3 course. + a GCSE resit in either English or Maths (if required).	FIVE 9-4 GCSE grades. No alternatives to GCSE accepted.	At least THREE 5's in your top grades and either English OR Maths GCSE.	Either GCSE English and Maths grade 4 or above. Individual course requirements must also be met.
4	2 Vocational Level 3 courses. + 1 A Level. + a GCSE resit in either English or Maths if required.	FIVE 9-4 GCSE grades. Only one alternative (e.g. BTEC) to GCSE accepted.	At least FIVE 4's in your top 5 grades. With this profile you would study 2 vocational Level 3 courses alongside 1 A Level.	Either GCSE English and Maths grade 4 or above. Individual course requirements must also be met.

Entry Requirements

At Cardinal Langley we have an entry requirement that prospective students must fulfil in order to successfully enrol with us. Our entry requirement is a minimum of five standard passes at GCSE (9-4) in five different subjects (only one BTEC will be considered), with at least one being GCSE English or GCSE Maths.

Unfortunately, we are unable to offer you a place if you need to resit both GCSE English and Maths.

<i>Subject</i>	<i>Guidance</i>
Art & Design	A minimum of grade 4 in GCSE Art plus portfolio of work.
Biology	A minimum of two grades 6 in GCSE Science, plus a grade 6 in Maths.
Business	A minimum of grade 4 in both GCSE English and GCSE Maths.
Chemistry	A minimum of two grades 6 in GCSE Science, plus a grade 6 in Maths.
Computer Science	A minimum of grade 5 in GCSE Maths plus a minimum of grade 4 GCSE Computing (if studied).
Criminology	A minimum of grade 4 in GCSE English.
Digital Media	A minimum of grade 4 in GCSE English.
Economics	A minimum of grade 5 in GCSE English and a grade 5 in GCSE Maths.
English Language	A minimum of grade 5 in GCSE English.
English Literature	A minimum of grade 5 in GCSE English and English Literature.
Extended Project Qualification (EPQ)	Standard Sixth Form entry requirements.
French	A minimum of grade 5 in GCSE French. (Preferably Higher Tier GCSE) GCSE grade 5 or above in English Language.
Geography	A minimum of grade 5 in GCSE Geography and a grade 4 in GCSE English & Maths.
Health & Social Care	Standard Sixth Form entry requirements.
History	A minimum of grade 5 in GCSE History and GCSE English.
IT	A minimum of grade 4 in GCSE English.
Maths	A minimum of grade 6 in GCSE Maths.
Performing Arts	A minimum of grade 4 in GCSE English and a Level 2 Pass in Performing Arts (if studied).
Photography	A minimum of grade 4 in related GCSE subject (Art, Textiles or Graphics). Completion of a 'pre-course task' to check you are a suitable candidate if you do not have a creative background.
Physical Education	A minimum of grade 5 in GCSE PE plus participation in a competitive sport outside of school.
Physics	A minimum of two grades 6 in GCSE Science, plus a grade 6 in maths.
Politics	A minimum of grade 5 in GCSE English.
Psychology	A minimum of grade 5 in GCSE English and grade 4 at GCSE Maths.
Religious Studies	A minimum of grade 4 in GCSE RE and grade 4 at GCSE English.
Spanish	A minimum of grade 5 in GCSE Spanish (Preferably Higher Tier GCSE). GCSE grade 5 or above in English Language.
Sport	A minimum of two grade 4's in GCSE Science.
Travel & Tourism	A minimum of a grade 4 in GCSE English.

Courses

A Level Courses

- Art & Design
- Biology
- Business
- Chemistry
- Computer Science
- Economics
- English Language
- English Literature
- French
- Geography
- History
- Maths
- Photography
- Physical Education
- Physics
- Politics
- Psychology
- Religious Studies
- Spanish

Applied General Courses

- Criminology (Applied Diploma)
- Digital Media (Cambridge Technical)
- Health & Social Care (BTEC Level 3)
- IT (Cambridge Technical)
- Performing Arts (BTEC Level 3)
- Sport (BTEC Level 3)
- Travel & Tourism (BTEC Level 3)

Project

- Extended Project Qualification (EPQ)

** Whilst we aim to offer all these courses, sufficient student numbers are required for a group to be timetabled.*

Art & Design

A Level

What other subjects complement this A Level?

Photography
Music
Drama
French & Spanish
English
Humanities



The Art and Design course promotes an experimental approach using a range of materials including painting, print and mixed media. Observational drawing underpins all Art & Design practice and is an essential requirement for the course. Students engage in practical studio work aimed to further their knowledge and understanding of a range of processes. All practical work is contextualised with research and analysis of artists' work. The course offers different ways to develop your artistic flair, but also develop valuable life skills. You will learn how to be driven and self-motivated, because working independently is a key component of being successful in any Art-based A Level. Art and Design encourages students to think creatively as well as developing practical skills.

Why should I study this subject?

- Art and design is practical, exciting and creative and can be personalised to suit your own specific set of interests.
- Many of our students have gone on to study Art at Foundation and Degree level with several now teaching or working in a creative profession.
- We consistently achieve outstanding results.
- If you like working in a 'hands-on' manner.
- You prefer coursework based study.

Entry Requirements

A minimum of grade 4 in GCSE Art plus portfolio of work.

Where will this course lead me?

Developing your creative understanding can be useful in many fields of learning as well as a range of careers. It is particularly appropriate for advertising, architecture, industrial or product design, history of art, teaching, and work in the creative industries. After further study at an art school, Art & Design can lead to careers in design, textiles, fashion or even as a practising artist.

How will I be assessed?

This course is 60% coursework and 40% externally set examination. All work is internally assessed and then externally verified by an exam board moderator.

Biology

A Level

What other subjects complement this A Level?

Chemistry
Physics
Maths
Psychology
PE



This is a really exciting time to be studying Biology because so much new work is being done which affects all our lives; genetic engineering, the human genome project, genetic testing and screening, biotechnology, genetically modified organisms, cloning, conservation and sustainable resources are some examples of important issues that everyone should know about in order to understand new developments and to make informed decisions.

Why should I study this subject?

Biology A Level will give you the skills to make connections and associations with all living things around you. Biology literally means the study of life - and if that's not important, what is? Being such a broad topic, you're bound to find a specific area of interest, plus it opens the door to a fantastic range of interesting careers. Many people use an A Level in Biology in their future studies or work. Even if you don't decide to work in Biology, studying it still develops useful and transferable skills for other careers. You'll develop research, problem solving and analytical skills, alongside teamwork and communication. Universities and businesses regard all of these skills very highly.

Where will this course lead me?

Biology is an essential subject if you are interested in a career with a medical or bio-medical bias e.g. medicine, dentistry, veterinary science, nursing, pharmacy, physiotherapy, forensic science, or biochemistry. It is also an important and useful subject for anyone interested in careers in conservation, biotechnology, sports science and psychology. In addition there are a large number of biology related university degree courses e.g. Marine Biology, Microbiology, Zoology.

Studying Biology at A Level or degree also opens up all sorts of career opportunities, such as: Doctor, Clinical Molecular Geneticist, Nature Conservation Officer, Pharmacologist, Research Scientist, Vet, Secondary School Teacher, Marine Biologist, Dentist.

Entry Requirements

A minimum of two grades 6 in GCSE Science, plus a grade 6 in Maths.

How will I be assessed?

100% Examination; 3 x two hour papers including a 25 mark synoptic essay question. Practical skills are embedded within the course and are assessed across a range of lab work against 5 competencies.

Business

A Level



What other subjects complement this A Level?

Maths
History
Economics
IT
French & Spanish

Business gives you a broad foundation of skills and offers the challenge of examining real businesses in action. You'll learn the difficult art of interpreting business operations and determining the best concepts and strategies that could be employed to make a successful business.

You'll hunt for solutions in project management, people management, financial analysis, economics and marketing, and use your problem-solving to come up with theoretical and practical results.

Why should I study this subject?

The Business specialist will make sure that students are enabled to organise and plan for the demands of the curriculum with a solid and organised structure, itself much like a business plan. You will acquire a range of relevant business and generic skills, including decision making, problem-solving, the challenging of assumptions and critical analysis.

Business achieves good grades every year and it is an extremely popular course to take amongst Sixth Form students.

A Level Business is not only a qualification; it's a handbook for anyone thinking of entering the complex world of commerce.

Entry Requirements

A minimum of grade 4 in both GCSE English and GCSE Maths.

Where will this course lead me?

University to study Business or related subjects at degree level. It could also lead to apprenticeships in Business e.g. Management Consultancy, Teaching / Training, Marketing, Investment Banking, Distribution and Logistics Management.

How will I be assessed?

100% of the assessment is via examinations at the end of the two year course.

Students will sit 3 exams all 2 ¼ hours in duration:

Component 1: Business Opportunities and Functions

Component 2: Business Analysis and Strategy

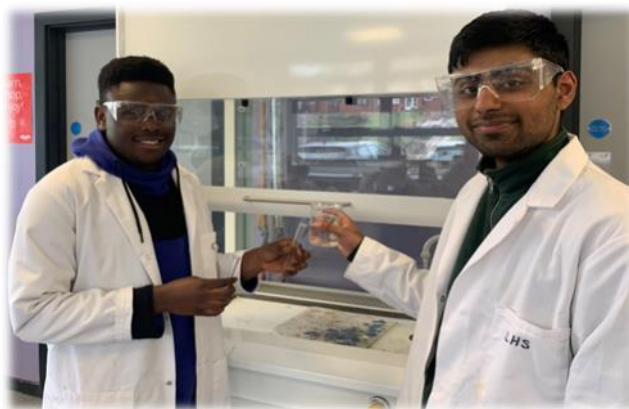
Component 3: Business in a Changing World

Chemistry

A Level

What other subjects complement this A Level?

Biology
Physics
Maths
Psychology
P.E.
Geography



After taking your GCSEs, there is no doubt that you will be well aware of the kind of work that is involved in Biology, Chemistry and Physics, and you know whether you have a passion and aptitude for Science.

While choosing these subjects at A Level presents another step up in terms of academic challenge, our team of specialist subject teachers are here to equip you with everything you need to be well prepared, ready and excited to meet the rigour of these intellectually stimulating qualifications.

Why should I study this subject?

Chemistry A Level is a highly respected A Level, with its broad variety of tested skills, and it is a good choice for many degrees and careers. Chemistry has been described as the 'central science' and is often combined with either Physics or Biology. The A Level Chemistry course has been designed to be a practical experience, with students undertaking both practical and theory work. The practical activities included will help the students to consolidate their understanding of the main aspects of Chemistry and equip them with the skills required to study this subject at higher levels. The course is designed to prepare students for progression either into Higher Education or employment and to develop their interest and enthusiasm in Chemistry.

Entry Requirements

A minimum of two grades 6 in GCSE Science, plus a grade 6 in Maths.

Where will this course lead me?

Some of the choices of subjects that you can study at degree level are; chemistry, biology pre-clinical medicine, mathematics and pharmacology. There are a wide range of careers available including Doctor, Analytical Chemist, Chemical Engineer, Toxicologist, Environmental Consultant, Science Writer, Patent Attorney, Pharmacologist, Research Scientist and Clinical Biochemist are to name a few.

How will I be assessed?

Paper 1: written exam - 35% of A Level

Paper 2: written exam - 35% of A Level

Paper 3: written exam - 30% of A Level

Computer Science

A Level



What other subjects complement this A Level?

IT
Art
Photography
French & Spanish
Digital Media

Sometimes in life, things don't always go right first time, but the crucial skills of learning where you went wrong and being able to solve those problems are what our Computer Science course equips you with in abundance. You'll discover an ability to actually think about *how* you're thinking, and then combine that with the technical knowledge to match your imagination, which ultimately helps you develop your ideas into satisfying, quality end products.

Our Computer Science staff teach you in a way that encourages building professionalism and being able to pitch your ideas, along with supporting you with all the academic and technical learning. This exciting course is perfect preparation for a career in an ever-evolving industry, including work in Programming, Cyber Security and Computer Game Development.

Why should I study this subject?

Computer Science is the study of computer technology, both hardware and software. Computer Science is a diverse field; the required skills are both applicable and in-demand across practically every industry in today's technology-dependent world. There are many careers focused around Computer Science across all industries.

Entry Requirements

A minimum of grade 5 in GCSE Maths plus a minimum of grade 4 GCSE Computing (if studied).

How will I be assessed?

2 examinations:
40 % each.
A programming project:
20%.

Where will this course lead me?

The skills you learn in Computing can be applied to so many other areas and enable you to constantly evolve your professional life. Enable you to combine technical skills with managerial skills. Enable you to be creative, bringing something new to the appearance of a program, process or application, developing and improving its function, innovation goes a long way in this field. The increasing influence of globalisation and developments in cross-continental communications has transformed the job market, with large businesses and corporations now able to relocate much of their development work to nations where the demand for skills can be met. Studying Computing and the logic of a variety of coding languages and processes enables you to advance the way that you think and relate to the world. Computing can take you down a number of different paths and many of these allow you to have a positive impact on lives in general. Computer technology is heavily connected to the medical field, education, entertainment, architecture and even in security, so the opportunity to ultimately use your computer studies to bring something good to people are vast.

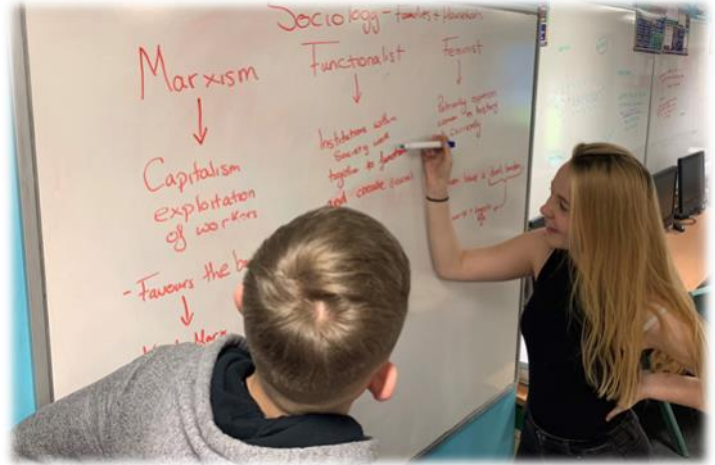
Criminology

Applied Diploma

What other subjects complement this course?

All subjects complement Criminology and in particular:

Psychology
English
Economics
History
Law



Criminology is the study of crime from a social perspective; the causes of crime, the social impact of crime, and the criminals involved in the crime. This is a growing subject nationally and the first Criminology course offered at Level 3. Criminology is rooted in the field of Sociology but also incorporates relevant aspects of Psychology and Law. Learners will study all aspects of criminality from explanations and theories of offending through to the Criminal Justice System and the role of agencies of social control.

Why should I study this subject?

Criminology is a very interesting subject and students will gain a great insight into the mind of a criminal and examine real criminal cases. Criminology offers an in-depth look at modern crime and punishment, and why certain groups may be societally victimised. Trips to Manchester courts will give students first-hand experience of the many different roles within the Criminal Justice System.

Entry Requirements

Students need to be independent, motivated, organised and determined to work hard.

A minimum of a grade 4 in English is required.

Where will this course lead me?

This Applied Diploma allows students to gain the understanding and skills to be able to consider employment within the Criminal Justice System, Law or Police Force, e.g. the National Probation Service, the Courts and Tribunals Service. Criminology is an increasingly popular university course and the Level 3 Diploma will provide a solid foundation for Higher Foundation.

How will I be assessed?

You will be assessed through coursework (50%) and written examinations (50%).

There are four Units over the two years; **Unit 1** - Changing Awareness of Crime, **Unit 2** - Criminological Theories, **Unit 3** - Crime Scene to Courtroom and **Unit 4** - Crime and Punishment.

Digital Media

Cambridge Technical



What other subjects complement this course?

IT
Art
Photography
French & Spanish
Computer Science

Sometimes in life, things don't always go right first time, but the crucial skills of learning where you went wrong and being able to solve those problems are what our ICT, Computing and Multimedia courses equip you with in abundance. You'll discover an ability to actually think about *how* you're thinking, and then combine that with the technical knowledge to match your imagination, which ultimately helps you develop your ideas into satisfying, quality end products. Our expert staff teach you in a way that encourages building professionalism and being able to pitch your ideas, along with supporting you with all the academic and technical learning.

Why should I study this subject?

Consistently a top performing ALPS Band subject, this qualification offers understanding by empowering students to work within the digital media industries. Researching the variety of methods used within the TV, Film and Gaming Industry and developing a range of creative skills that transfer into the workplace. The course is 50% exam and 50% coursework so they are good for a variety of learners and it also includes hands-on practical experience based upon real life scenarios. There are two externally assessed exam units where students have three opportunities to sit. The coursework units are internally assessed so we can choose when to assess the students.

Entry Requirements

A minimum of grade 4 in GCSE English.

Where will this course lead me?

This course will develop skills to enable you to progress to a variety of university courses and prepare for many job roles in the media and Digital IT sector, this includes: Web Designer, Graphic Designer, Film / Video Editor, Video Producer Blogger, Sound Engineer and many more.

How will I be assessed?

Examination: 2 exams. One in Year 12, One in Year 13 - 50% of the final grade.

Coursework: 3 modules - 50% of the final grade.

Economics

A Level



What other subjects complement this A Level?

History
Business
Maths
IT
French & Spanish

First of all, what is economics? Part of the social sciences group of subjects, economics explores the full spectrum of issues that impact on financial situations and decisions. From production to consumption, economics looks at how the world's resources are used by and distributed among individuals and organisations. This involves studying areas of politics, sociology, law, psychology, geography and history, at local and global levels. Economics A Level helps you understand how to link the simple, everyday factors with huge concepts such as the financial crisis and Brexit.

Why should I study this subject?

By the time you have finished studying economics, you'll also have developed some very valuable, transferable skills:

Communication: presenting findings and explaining complex data.

Numeracy: handling complex data and applying mathematical and statistical analysis methods.

Problem-Solving: extracting information, drawing conclusions and making recommendations.

Time Management: completing specific tasks within designated time frames.

Analytical and Evaluative Skills: analysing research methods, data, conclusions and recommendations.

Entry Requirements

A minimum of grade 5 in GCSE English and a grade 5 in GCSE Maths.

Where will this course lead me?

A degree in economics provides you with a wide array of both subject-specific and transferable skills, all of which are highly sought after by employers. Economic graduates find employment in a range of different areas including Government Departments, Banks (high street and city), Insurance and Accountancy Firms, Law and Education.

How will I be assessed?

100% of the assessment is via examinations at the end of the 2 year course.

Students will sit 3 exams (Microeconomics, Macroeconomics and a synoptic paper).

Each paper is equally weighted.

English Language

A Level



What other subjects complement this A Level?

English Literature
History
Psychology
Drama
Art based subjects
Sciences and Humanities
French & Spanish

Studying English Language goes far beyond just reading and writing. The study of language inspires you to engage with your world and yourself to understand the assumptions and attitudes that underlie our way of communication and create the building blocks of English.

The English Language is continually evolving and through this programme of study, you will be able to explore the change and evolution of language, reviewing and forming your own opinions on its use. The reasons for language variety can be down to factors such as gender, power and technology but also, you will explore development of language from the point of view of children; examining how they learn to talk, read and write.

Why should I study this subject?

There are many opportunities to extend your interest in the course. You will be welcomed to enter creative writing competitions, celebrating your creative writing and hopefully, providing a platform for publishing. We have forged strong links with The University of Manchester and The John Ryland's Library in order to investigate further Language Change. You will also have the chance to develop your exam technique with the support from leading figures in the field, by going on a University revision day.

Entry Requirements

A minimum of a grade 5 in GCSE English.

Where will this course lead me?

As well as leading directly to degree courses in English Language, Linguistics and Creative Writing, you can combine the study of English Language with a wide range of complementing subjects. It is also a strong foundation for students looking to pursue a career in Journalism, the Media or Teaching, as well as providing a secure basis for graduate opportunities.

How will I be assessed?

Paper 1: Language, the Individual and Society - written assessment (40% of the A Level).

Paper 2: Language Diversity and Change - written assessment (40% of the A Level).

Non-exam assessment: Language in Action - (20% of the A Level).

English Literature

A Level

What other subjects complement this A Level?

English Language
History
Psychology
Drama
Art based subjects
Sciences and Humanities
French & Spanish



Studying English Literature at A Level goes far beyond just reading and writing . It is a challenging and exciting course which focuses on the most refined and insightful use of our language to convey meaning and context with both style and depth.

You will experience a wide range of texts including Shakespeare, modern Literature, drama and poetry. Taking a contextual approach, you will explore Literature from the point of view that no text exists in isolation but is the product of the time in which it was produced. You will learn to evaluate the different and conflicting interpretations of a text and you will become confident about expressing your own judgement.

Why should I study this subject?

There are lots of opportunities to extend your love of Literature beyond the classroom. You will be invited to become part of our Theatre group, attending plays and performances up and down the country. You will also have the chance to develop your exam technique with the support from leading figures in the field, by going on a University revision day.

Entry Requirements

A minimum of a grade 5 in GCSE English and English Literature.

Where will this course lead me?

As well as leading to degree courses in English Literature, it is well regarded by Universities and employers as a general qualification, suitable for all higher education courses or careers. The skills that you will develop in high order reading, written accuracy and fluency, confidence in group work and discussions, textual analysis, research and ICT will be enormously useful in life. As a facilitating subject, many universities regard English Literature as a desirable A Level for a wide range of courses.

How will I be assessed?

Paper 1: Love through the ages - written assessment (40% of the A Level).
Paper 2: Text in Shared Contexts - written assessment (40% of the A Level).
Independent Critical Study: Texts across Time (20% of the A Level).

Extended Project Qualification (EPQ)

Project

What other subjects complement this course?

The EPQ can be done with any other Level 3 subjects; students can base their projects on an aspect of one of their courses, but cannot duplicate work undertaken for another qualification. Alternatively, students can choose to focus their project on something completely different from their academic subjects.



The EPQ is an additional qualification that encourages you to think independently and develop your skills in research, time management and creativity. You will choose a topic that you are passionate about and explore it in depth.

The qualification is designed to develop creativity and curiosity and is equivalent to half an A Level. Students embark on a largely self-directed project: you choose a topic, then plan, research and develop your ideas and decide on your finished product. A project topic may be directly related to your main study programme, but should look beyond the syllabus.

Why should I study this subject?

The EPQ is highly valued by universities, as it demonstrates the independent learning skills which are part of higher level study. Some universities give reduced offers to students who have completed or are working on their EPQ. It attracts UCAS points equivalent to half an A Level.

Entry Requirements

Sixth Form entry requirements.

Where will this course lead me?

An EPQ demonstrates a lot of skills that are valued by universities and employers, such as time management, self-motivation, research and presentation skills. It can set you apart from other candidates.

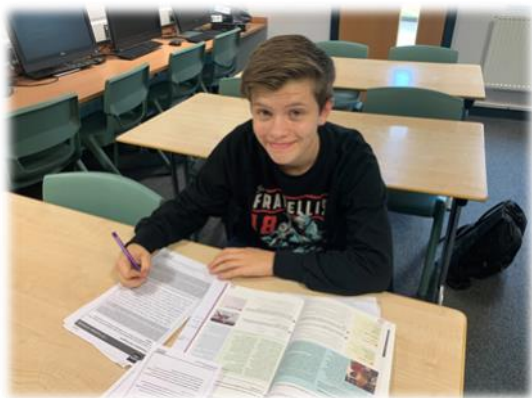
How will I be assessed?

Your final project, along with a production log, will be submitted to the exam board.

You will also do a presentation on your project to a small group in school.

French

A Level



What other subjects complement this A Level?

French is a good fit with most subjects at A Level and some vocational courses. There are obvious links with English Language and Literature, but its reach extends way beyond these subjects. The topics studied at A Level involve history, geography, politics, music, drama, art, architecture, cinema as well as the language itself. The skills used are compatible with any essay based, and problem solving subjects. A good knowledge of French enhances future employment prospects in many careers including business and the creative industries.

Speaking multiple languages is a coveted ability by many employers and could open up a world of opportunities for you. Travelling abroad for work, and also leisure, is enhanced by being able to speak the local language and having an understanding of the local culture. Whilst studying French, you'll also learn about political issues, culture and social differences between places that speak that language as their native tongue.

Why should I study this subject?

French students at Cardinal Langley benefit from smaller class sizes to maximise interactions between student and teacher, and also student to student, which enhances learning.

Languages are about communication. The better we can communicate, the better the relationships we have with people. This is true at the level of an individual, and on a wider scale at the level of countries. When we learn to speak another people's language, we start to appreciate what makes them tick - and that can benefit trade as well as helping to avoid conflict between nations.

Entry Requirements

A minimum of grade 5 in GCSE French. (Preferably Higher Tier GCSE). GCSE grade 5 or above in English Language.

Where will this course lead me?

An A Level in a foreign language stands out to almost any university or potential employer, and is considered an impressive and desirable skill. Language competence enables people and business to take full advantages of the opportunities of the twenty-first century.

Foreign languages are also included in the list of facilitating subjects if you are considering applying to a Russell Group university.

How will I be assessed?

All assessments take place at the end of Year 13.

Unit 1: Listening, reading and writing - 50% of the A Level qualification.

Unit 2: Writing - 20% of the A Level qualification.

Unit 3: Speaking - 30% of the A Level qualification.

Geography

A Level

What other subjects complement this A Level?

Geography is renowned for its links with other subjects. Skills that are developed in Geography A Level will also be challenged in:

Biology, Chemistry & Physics
Maths & English Language
French & Spanish
ICT & Computing
Business
Health & Social Care



Geography A Level is the perfect choice if you enjoy learning about people, societies, economics, cultures and the environment. The skill-set developed when studying Geography is highly respected by universities and employers alike, and the subject can lead to a multitude of careers from business location systems to emergency management.

'Geography students hold the key to the world's problems,' and this diverse subject could help you shape your future path.

Why should I study this subject?

Geography is an extremely enjoyable and fulfilling subject. The majority of students who study this A Level at Cardinal Langley have a very positive experience and leave with a good grade, a set of skills and the knowledge and understanding that equips them for the next step, be it university or employment.

In conjunction with classroom based learning, you will also pursue activities that allow you to study this subject outside of the classroom, through field work as well as through our links with the Geographical Association attending University style lectures and student conferences.

Entry Requirements

A minimum of grade 5 in GCSE Geography and a grade 4 in GCSE English and Maths.

Where will this course lead me?

Universities regard Geography A Level very highly and welcome students who meet the entry criteria onto most courses if they are in possession of a Geography A Level grade. This is because the subject develops skills that can be applied to a range of academic and life situations, such as numeracy, literacy, ICT, team work, problem solving, evaluation, critical thinking, interpretation and organisation. This is in addition to various geographical skills.

How will I be assessed?

Unit 1: Physical Geography - 40% of the A Level.

Unit 2: Human Geography - 40% of the A Level.

Unit 3: Geographical Fieldwork Investigation - 20% of the A Level.

Health & Social Care

BTEC Level 3



What other subjects complement this course?

Psychology
Criminology
Biology

Whatever profession you hope to enter into in later life, learning the skills of how to deal with people in an empathetic way will always be invaluable.

Many of the students who choose to study Health & Social Care often aim for careers in nursing, occupational therapy, the paramedics, and other care-related vocations. You'll study a mix of psychology, sociology and human biology on the course which helps you learn how to support people with their communication, their rights, their dignity, their choices and their employment.

Why should I study this subject?

This course allows students to consider lifestyle choices and what impact these can have on health and well-being, as well as investigating different jobs in the care sector. If you would like a course which enables you to experience some of the workplaces that care for adults, young children, or those with special needs, then Health and Social Care is a great starting point!

Entry Requirements

Standard college entry requirements.

Where will this course lead me?

Through this BTEC you could go on to relevant employment or training within health and social care services such as Social Work, Midwifery, Paramedic or Care Worker.

How will I be assessed?

- Human Lifespan Development - 90 minute written exam, set and marked externally
- Working in Health & Social Care - 90 minute written exam, set and marked externally
- Meeting Individual Care and Support Needs - Internal assignment
- Optional Unit - Sociological Perspectives - Internal assignment

History

A Level

What other subjects complement this A Level?

English Literature
English Language
Government & Politics
Geography
French & Spanish
Religious Studies
Economics



If you want to understand the modern world and formulate your own opinions and responses to it, then History A Level at Cardinal Langley Sixth Form College is for you. You'll look at the past using several different perspectives, including political, economic, cultural and social viewpoints.

History is an academic subject that widens students' experiences and develops qualities of perception and judgement. Students will acquire important abilities and qualities of mind that can be transferable to many university degrees, occupations and careers. It is extremely enjoyable and not only enables students to learn about the past but to understand the past and come to a better understanding of the present.

Why should I study this subject?

Lessons balance expert guidance from your teachers with interactive activities, and you'll develop invaluable skills to take with you to university or the workplace, such as: researching, textual analysis and expressing qualified opinions through clear and concise written communication. History offers invaluable opportunities to acquire and improve on many of the skills that have been identified as being vital with Higher Education and employers.

Entry Requirements

A minimum of grade 5 in GCSE History and GCSE English.

Where will this course lead me?

The opportunities for History students into University and beyond are both diverse and wide ranging. Such as; Lawyer, Journalism, Public Relations, Investment Banker, Writer and Editor, Teacher, University Lecturer, Researcher, Press Relations, Civil Service, Business Management Training Programmes.

How will I be assessed?

Unit 1: The Quest for Political Stability in Germany 1871-1991 - 40% of the A Level. 2 hours 30 minutes written exam.

Unit 2: The Making of Modern Britain 1951-2007 - 40% of the A Level. 2 hours 30 minutes written exam.

Unit 3: Historical Investigation: 3000 - 3500 word essay based on a question in the context of approximately 100 years - 20% of the A Level.

IT

Cambridge Technical



What other subjects complement this course?

Digital Media
Art and Photography
Maths
Computer Science

Sometimes in life, things don't always go right first time, but the crucial skills of learning where you went wrong and being able to solve those problems are what our IT course equip you with in abundance. You'll discover an ability to actually think about *how* you're thinking, and then combine that with the technical knowledge to match your imagination, which ultimately helps you develop your ideas into satisfying, quality end products.

Our IT staff teach you in a way that encourages building professionalism and being able to pitch your ideas, along with supporting you with all the academic and technical learning. This exciting course is perfect preparation for a career in an ever-evolving industry, including work in Programming, Cyber Security and Computer Game Development.

Why should I study this subject?

Consistently a top performing ALPS Band. This qualification offers understanding by empowering students to work with IT industry, digital media and technologies. This leads to practical and creative skills that transfer into the workplace. The course is 50% exam and 50% coursework so they are good for a variety of learning styles and is also includes hands-on practical experience based upon real life scenarios. There are two externally assessed exam units where students have two opportunities to sit. The coursework units are internally assessed so we can choose when to assess the students.

Entry Requirements

A minimum of grade 4 in GCSE English.

Where will this course lead me?

This course will develop skills to enable you to progress to a variety of university courses and prepare for many job roles in the sector, this includes: Computer Programmer, Technical Support, Web Designer, Graphic Designer, Data Analyst, Robotics and many roles that haven't been created yet!

How will I be assessed?

- Unit 1:** Fundamentals of IT. *Externally assessed.*
- Unit 2:** Global Information Systems. *Externally assessed.*
- Unit 6:** Application Design. *Internally assessed.*
- Unit 8:** Project Management. *Internally assessed.*
- Unit 9:** Product Development. *Internally assessed.*

Maths

A Level

What other subjects complement this A Level?

Economics
Business
Physics
Biology
Chemistry
Computing



The study of Mathematics develops your imagination and trains you to problem solve in a clear and logical way. In Maths you will develop a way of thinking that will stay with you for the rest of your life, allowing you to analyse problems and come up with creative solutions in lots of different situations.

Why should I study this subject?

Having studied Maths throughout your school career, you'll be fully aware of the challenges that it presents, but A Level Maths gives you the chance to leave Sixth Form with one of the most highly respected qualifications in education.

This A Level will provide you with many opportunities to test and extend your problem solving skills as well as develop your ability to analyse large sets of data.

Entry Requirements

A minimum of grade 6 in GCSE Maths.

Where will this course lead me?

Mathematics graduates are the highest paid on average in the UK. People who study A Level maths are sought after for jobs in industry, finance, accountancy and the actuarial profession.

How will I be assessed?

This course is 100% exam and there will be three papers at the end of the course, each assessing a variety of Pure and Applied Maths. At the end of each taught unit there will be an assessment using previous examination questions which will generate PLCs for areas of development within each unit.

Performing Arts

BTEC Level 3

What other subjects complement this course?

English Literature
Psychology
Music
Art
French & Spanish



BTEC Level 3 Performing Arts is ideal for developing your confidence, along with learning to solve problems creatively and communicating clearly. All of these traits are highly desirable and sought after when it comes to university and employment.

You'll experiment with your creativity and explore new techniques, working independently or in groups and participate in thoughtful, stimulating and intelligent discussions. As well as studying pre-existing works, you'll have the opportunity to create and perform your own original pieces.

Why should I study this subject?

The course is ideal for any student who wishes to progress their career in acting or go into creative industries. The course is a vocational qualification that enables students to develop their performance skills to a very high level and to learn the craft of acting. It is a nationally recognised qualification by well-established Universities and Drama Schools.

Entry Requirements

A minimum of grade 4 in GCSE English and Level 2 Pass in Performing Arts (if studied).

Where will this course lead me?

Drama School, University or an Apprenticeship. This course will provide you with the skills to transfer to other subjects and courses outside of Arts.

How will I be assessed?

The majority of your learning will take place in the Drama studio where you will develop specific acting techniques and skills. You will learn through rehearsing, performing and research. You will be assessed through practical rehearsal, performance and supporting logs / evaluations of the work produced.

2 internally assessed units and 2 externally assessed.

Photography

A Level



What other subjects complement this A Level?

Art & Textiles
Photography
Music
Drama
French & Spanish
English

Photography is an art-based subject. You will be taught basic and more advanced photographic skills alongside creative use of digital software. If you're interested in expressing yourself through the lens and have a desire to master image manipulation and enhancement, then this is the course for you.

Why should I study this course?

Photography can be fun, creative and can be personalised to suit your own specific set of interests.

- We consistently achieve outstanding results
- If you like working in a practical manner
- You prefer coursework based study

Entry Requirements

A minimum of grade 4 in a related GCSE subject (Art, Textiles or Graphics).
Completion of a 'pre-course task' to check you are a suitable candidate if you do not have a creative background.

Where will this course lead me?

Developing a creative mindset is useful in many fields of employment and further education. You can go on to study at degree level or take an apprenticeship in photography. You can also work in the creative industry in a photography studio or film / TV setting and you could even start your own business.

How will I be assessed?

This course is 60% coursework and 40% externally set examination.
All work is internally assessed and then externally verified by an exam board moderator.

Physical Education

A Level



What other subjects complement this A Level?

Biology
Physics
Psychology
English
Business
History

While a small percentage of the course in PE involves the 'doing' of sporting activities, the subject is much more about the scientific study of sport, along with its importance within society.

Learning about specific health benefits always proves popular with students looking to progress into a sporting profession, and uniquely, the subject helps develop qualities like leadership and organisation.

Sports place in society is also looked at in-depth, analysing its role in schooling throughout the ages along with the differing trends of the times.

Why should I study this subject?

We are consistently one of the top performing subjects when compared to national statistics. This is an excellent choice of A Level if you are keen to develop your understanding of sport and physical activity through both practical and theoretical learning experiences, willing to participate in a range of activity of areas both in and out of school, committed to developing your practical performance in different areas, motivated, proactive in your learning and committed to learning outside of lessons through independent study and research.

Entry Requirements

A minimum of grade 5 in GCSE PE plus participation in a sport outside of school.

Where will this course lead me?

A Level Physical Education provides a platform to a range of higher education and employment opportunities, which include; Sports Science, Sports Media, Outdoor Education, Health Promotion, Physiotherapy, Armed Forces, Sports Management, Sports Development, Coaching / Teaching / Training, Personal Training and Fitness Industry, Professional Sport and Performance, Officers.

How will I be assessed?

Physiological Factors Affecting Performance - 2 hour exam. 30% overall mark.
Psychological Factors Affecting Performance - 1 hour exam. 20% overall mark.
Socio-cultural and Contemporary Issues - 1 hour exam. 20% overall mark.
Performance within Physical Education - Externally moderated. 20% overall mark.

Physics

A Level

What other subjects complement this A Level?

Chemistry
Biology
Maths
Further Maths



Physics is at the heart of everything, making it the basis of all modern science and technological developments. You'll delve inside the nucleus to discover sub-atomic particles, consider the true nature of light and how its properties may be exploited. It's a course to develop your imagination, investigative skills and mathematical ability.

After taking your GCSEs, there is no doubt that you will be well aware of the kind of work that is involved in Biology, Chemistry and Physics, and you will know whether you have a passion and aptitude for Science.

While choosing these subjects at A Level presents another step up in terms of academic challenge, our team of specialist subject teachers are here to equip you with everything you need to be well prepared, ready and excited to meet the rigour of these intellectually stimulating qualifications.

Why should I choose this subject?

This course builds upon concepts and skills that you will have developed through GCSE. Students will have more opportunities to learn and use practical skills to link theory to practice, deepening their knowledge and understanding of the laws that govern the physical world.

Entry Requirements

A minimum of two grades 6 in GCSE Science, plus a grade 6 in Maths.

Where will this course lead me?

Studying Physics at A Level could lead on to a vast array of subjects at degree level. Most popular degree courses taken by students with A Level physics include; Mathematics, Physics, Mechanical Engineering, Computer Science, Civil Engineering, Medicine, and Medical Physics.

How will I be assessed?

Paper 1: Any content from Units 1-5, and 6.1 (Periodic motion). 34% of A Level.

Paper 2: Thermal physics, fields & nuclear physics. 34% of A Level.

Paper 3: Practical skills and data analysis Astrophysics. 32% of A Level.

Politics

A Level



What other subjects complement this A Level?

English Literature & Language
Economics
History
Geography
French & Spanish
Religious Studies

Politics A Level isn't simply about learning to pass an exam; it's a journey to change the way in which you see things and develop the ability to think critically, understanding sources and appreciating what people stand for.

No one is unaffected by politics. By studying politics, students will learn how important decisions about everyday life are made. British politics is more exciting than ever with debates over welfare reform and Brexit. Students will acquire a knowledge and understanding of the UK political system, as well as broadening their horizons across the water to the USA and to more complex ideas of ideology. Students will gain analytical and practical skills. It is extremely enjoyable and enables students to learn about the society they live in, keep up to date with current affairs and develop a voice in how they are governed.

Why should I study this subject?

Our teachers are passionate about keeping abreast of current news and national and global political issues, and lessons encourage stimulating and thought provoking discussions. As well as written work, students will hone their public speaking skills and Politics is ideal for those who enjoy talking and debating, as well as people with an active curiosity about ethics, philosophy and the cogs that make society work.

Entry Requirements

A minimum of grade 5 in GCSE English.

Where will this course lead me?

The opportunities for Politic students into University and beyond are both diverse and wide ranging. Such as; Lawyer, Journalism, Public Relations, Investment Banker, Writer and Editor, Teacher, University Lecturer, Researcher, Press Relations and the Civil Service.

How will I be assessed?

Component 1: UK Politics - written examination: 2 hours; 33.3% of the qualification.

Component 2: Governing the UK - written examination: 2 hours; 33.3% of the qualification.

Component 3: Comparative Politics - written examination: 2 hours; 33.3% of the qualification.

Psychology

A Level



What other subjects complement this A Level?

Biology
English
Maths
Health & Social Care
Physical Education
Business

Psychology as a science tries to understand how and why people think, feel and act in different ways. The subject is broad and encompasses several levels of analysis. For example, neurological, cognitive (thoughts), social and cultural approaches are used to create an understanding of human thought and behaviour. Each approach in Psychology focuses on understanding humans from its specific perspective. Research in Psychology is empirically oriented, which means understanding how people actually think and behave. A number of methods are used for this purpose, such as experiments, interviews, observations and questionnaires. The methods may have a qualitative character, but often include psychological investigations, quantitative methods and statistics.

Why should I study this subject?

Psychology is an excellent choice at A Level because it works so well with many different subjects. It is a fascinating course that will really get you to question the world around you and why people behave the way they do whilst developing a skill set which enables you to demonstrate both analytical and critical thinking whilst evaluating psychological theories and perspectives in Psychology. If you are interested in people, then it is the subject for you. We always have a large successful cohort of results and we are one of the highest performing subjects in Year 13.

Entry Requirements

A minimum of grade 5 in GCSE English and a grade 4 in Maths.

Where will this course lead me?

Studying Psychology at University can give you a whole host of exciting career options, including: Marketing, Business Development, Accountancy, Human Resources, Forensic Psychology, Occupational Therapy, Clinical Psychology, Nursing and Teaching.

How will I be assessed?

Paper 1: Memory, Social Influence, Attachment, Psychopathology.
Written examination: 2 hours; 33.3% of the qualification.

Paper 2: Approaches, Biopsychology, Research methods.
Written examination: 2 hours; 33.3% of the qualification.

Paper 3: Issues & Debates, Relationships, Schizophrenia, Forensics.
Written examination: 2 hours; 33.3% of the qualification.

Research methods will be included on all 3 papers, along with 10% Maths content.

Religious Studies

A Level

What other subjects complement this A Level?

This A Level can be studied alongside many subjects, in particular:

History
Politics
English Language & Literature
Psychology
French & Spanish

'The unexamined life is not worth living'. Socrates



Students with an enquiring mind, those that question faith and its role in the world, and consider the existence of God would love Religious Studies. Our students love the wide variety of areas covered in the course including the evidence of evil and suffering, the challenge of atheism, if we can effectively argue for the existence of an all-loving God and how we make moral decisions.

Religious studies at Cardinal Langley Sixth Form enables you to develop a wide range of transferable skills as well as begin to grapple with questions that have been asked for thousand of years. Often, we ask the question 'Why?'. Our question is 'Why not Religious Studies?!'

Why should I study this subject?

Both employers and universities value the specific skills that develop through the study of philosophy. You will develop the ability to: analyse and present well-constructed arguments, think logically and critically about ideas and issues, understand complex views; to distinguish subtle differences between views and to explore common ground; write clearly and persuasively; think creatively and come up with solutions to problems; be open to new ways of thinking and ideas.

You will also have access to teachers with many years of experience and a well-stocked resource library. Our students do well and in 2019 our results were in the top 25% of the country.

Entry Requirements

A minimum of grade 4 in GCSE RE and grade 4 in GCSE English.

Where will this course lead me?

Where won't it lead you? Due to the broad areas covered in 'RS', students have gone on to do degrees in History, Political Philosophy, Education Studies, Theology, Politics and have also embarked on careers in Nursing, Teaching and Law to name but a few.

How will I be assessed?

Paper 1: Philosophy of Religion: 2 hour exam - 33.3% of the overall A Level.

Paper 2: Religion and Ethics: 2 hour exam - 33.3% of the overall A Level.

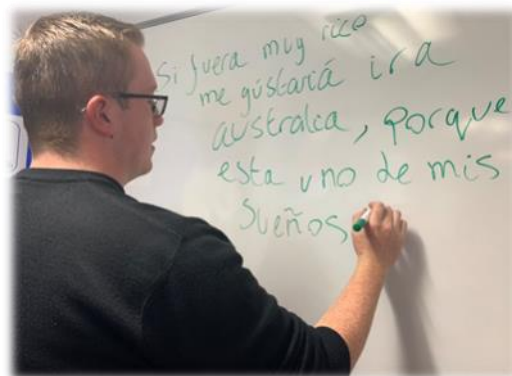
Paper 3: A Study of Christianity: 2 hour exam - 33.3% of the overall A Level.

Spanish

A Level

What other subjects complement this A Level?

A foreign language complements almost any other A Level subject. There are obvious links with English Language and Literature, but its reach extends way beyond these subjects. The topics studied at A Level involve history, geography, politics, music, drama, art, architecture, cinema as well as language itself. The skills used are compatible with any essay based, and problem solving subjects. A good knowledge of Spanish enhances future employment prospects in many careers including



Speaking multiple languages is a coveted ability by many employers and could open up a world of opportunities for you. Travelling abroad for work, and also leisure, is enhanced by being able to speak the local language and having an understanding of the local culture. Whilst learning Spanish, you'll also learn about political issues, culture and social differences between places that speak that language as their native tongue.

Why should I study this subject?

Spanish students at the college benefit from smaller class sizes to maximise interactions between student and teacher, and also student to student, which enhances learning.

Languages are about communication. The better we can communicate, the better the relationships we have with people. This is true at the level of an individual, and on a wider scale at the level of countries. When we learn to speak another people's language, we start to appreciate what makes them tick - and that can benefit trade as well as helping to avoid conflict between nations.

Entry Requirements

A minimum of grade 5 in GCSE Spanish.
(Preferably Higher Tier GCSE).
GCSE grade 5 or above in English Language.

Where will this course lead me?

An A Level in a foreign language stands out to almost any university or potential employer, and is considered an impressive and desirable skill. Language competence enables people and businesses to take full advantages of the opportunities of the twenty-first century. Foreign languages are also included in the list of facilitating subjects if you are considering applying to a Russell Group university.

How will I be assessed?

All assessments take place at the end of Year 13.

Unit 1: Listening, reading and writing - 50% of the A Level qualification.

Unit 2: Writing - 20% of the A Level qualification.

Unit 3: Speaking - 30% of the A Level qualification.

Sport

BTEC Level 3

What other subjects complement this course?

Business
Biology
ICT
Psychology



While a small percentage of the course in Sport involves the 'doing' of sporting activities, the subject is much more about the scientific study of sport, along with its importance within society.

Learning about specific health benefits always proves popular with students looking to progress into a sporting profession, and uniquely, the subject helps develop qualities like leadership and organisation.

Sports place in society is also looked at in-depth, analysing its role in schooling throughout the ages along with the differing trends of the times.

Why should I study this subject?

BTEC Sport is an exciting course and is designed to progress students onto a higher qualification. It consists of a range of technical and academic skills. It is work-related learning, giving learners an edge and opening the doors to Higher Education or employment in sport sectors.

There are clear progress routes, such as: BSc in Sport, Physical Education and Coaching Science. BTEC Sport also supports progression into direct entry level roles such as; physical activity leader or fitness / leisure assistant. This course also provides you with transferable skills, such as; communication, team work and leadership skills.

Where will this course lead me?

If you wish to get a job straight away you could work and train in: Sports Therapy, Health / Sport Clubs, Officiating, Sports Science, Sports Journalism.

If you wanted to progress to University and gain a degree qualification then that could help you get in to the following careers; The Armed Forces, Police, Fire Service, Physiotherapy, Teaching Physical Education, Health Club Management, Sports Development Officer, Sports Nutritionist, Fitness Instructor and many more.

Entry Requirements

A minimum of two grade 4's in GCSE Science.

How will I be assessed?

Unit 1: Anatomy & Physiology - externally assessed.

Unit 2: Fitness Training & Programming for health, sport & wellbeing - externally assessed.

Unit 3: Professional Development in the Sports Industry - internally assessed.

Unit 5: Application of Fitness Testing - internally assessed.

Travel & Tourism

BTEC Level 3

What other subjects complement this course?

English Literature
History
Business
Geography
Spanish & French
Maths



This qualification provides the knowledge, understanding and skills that will prepare students for further study or training. Everyone taking this qualification will study three mandatory units, covering the following content areas:

- The travel and tourism industry - developing the skills needed to examine, interpret and analyse.
- Different types of destinations - investigating the features and appeal of global destinations.
- Marketing in Travel & Tourism - researching the different methods used to market travel products.

An optional unit: Visitor attractions may also be studied.

Why should I study this subject?

In addition to the travel and tourism sector-specific content, the requirements of the qualification will mean students develop transferable and higher-order skills, which are highly regarded by higher education providers and employers. For example, when studying the World of Travel and Tourism unit, students will analyse information and data from the travel and tourism industry, identifying trends and the potential impact of different factors on the industry and its customers.

Where will this course lead me?

This qualification is designed primarily to support progression to employment following further study at university. However, it can also support students progressing to employment directly, or via an apprenticeship. It will give the successful student the transferable knowledge, understanding and skills that will be an advantage when applying for a range of industry linked training programmes, or apprenticeships in the travel and tourism sector or another sector of their choice.

Entry Requirements

A minimum of a grade 4 in GCSE English.

How will I be assessed?

- Unit 1:** The World of Travel and Tourism - externally assessed.
- Unit 2:** Global destinations - externally assessed.
- Unit 3:** Principles of Marketing - internally assessed.
- Unit 4:** Visitor Attractions - internally assessed.

The Application Process

1	<p><i>Sixth Form Open Evening</i></p> <p>All students interested in joining our Sixth Form are invited to our Sixth Form Information Evening in November. This event will give you the opportunity to find out more about the college, meet our subject specialists, and, most importantly find out all that you need to know about the subjects that interest you.</p> <p>Join us on Thursday 3rd November 2022 (6pm - 8pm) for our Open Evening.</p>
2	<p><i>The Application Form</i></p> <p>The next stage in the process involves completing an application form where you indicate which subjects you would like to study in Sixth Form. Paper application forms are available with this prospectus and / or via the Sixth Form office. Electronic application forms can be found on our website: https://sixth.clrchs.co.uk/</p> <p>The closing date for applications is Friday 16th December 2022.</p>
3	<p><i>Advice & Guidance Meeting</i></p> <p>You will be invited to an Advice and Guidance meeting to discuss with a senior member of Sixth Form team your future ambitions, career plans and choice of subject options.</p> <p>The meetings will take place in January / February, and we will contact you prior to this with a date and time. If you're still unsure about which courses to study, we will be there to support you and give advice.</p>
4	<p><i>A Letter Home</i></p> <p>We will write to you to tell you whether you have been successful in securing a provisional place. Hopefully you will be successful in your application but if you have any queries please do not hesitate to get in touch.</p>
5	<p><i>Results & Enrolment</i></p> <p>When you receive your GCSE results in August you will complete your enrolment with us before starting your studies in September.</p> <p>GCSE Results Day will be on Thursday 24th August 2023. You will enrol with Mr Greaves (Head of Sixth Form) or Mr Gillespie (Assistant Head of Sixth Form).</p>
<p>To make sure you can join us, put the work in NOW to get the GCSE grades you will need!</p>	

Potential Course Options

Subject	Reasons
E.g. Business	<i>Links to Digital Media course & Economics. Enjoy the subject.</i>
1	
2	
3	
4	
5	
6	
7	



Notes

Structure of Our Day

Time	Activity
08:20 - 08:35	Registration
08:35 - 09:35	Period 1
09:35 - 10:35	Period 2
10:35 - 10:55	Break
10:55 - 11:55	Period 3
11:55 - 12:55 <i>or</i> 12:35 - 13:35	Period 4
11:55 - 12:35 <i>or</i> 12:55 - 13:35	Lunch
13:35 - 14:30	Period 5

As you can see from the information above, Form registration begins at 8:20am, with lessons commencing at 8:35am. Formal lessons are then finished by 2:30pm (which is earlier than other local colleges and sixth forms). However, it is expected that students in the Sixth Form are likely to stay beyond this time to complete class work, revise for assessments, continue to work on projects or get involved in enrichment activities.

Class of 2022



One Last Message

Thank you for taking the time to read our prospectus. Here at Cardinal Langley Sixth Form we offer a broad range of academic subjects, pathways and pastoral support, enabling all students the opportunity to progress and achieve their aspirations. Subject specialist teaching along with a vibrant, supportive working environment allows all students to develop as individuals ready to fully embrace the vast range of opportunities offered to them. It is with great pleasure to have had the honour of working in such a special place for over 20 years, with the pride and satisfaction gained from witnessing students mature and achieve their aspirations, being immeasurable.

I am aware that making such a crucial decision around your future education is very difficult but I would advise you to seriously consider Cardinal Langley Sixth Form as the destination of choice for the next step in your academic journey.

I look forward to supporting you in your application to Cardinal Langley Sixth Form. If you require further assistance prior to this date please do not hesitate to contact us and we will be more than happy to help you out.

I wish you all the best in your Year 11 exams and look forward to welcoming you into our Sixth Form in September.

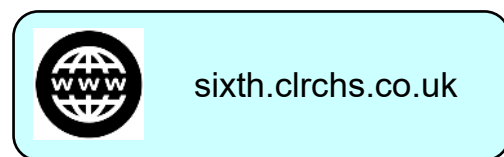
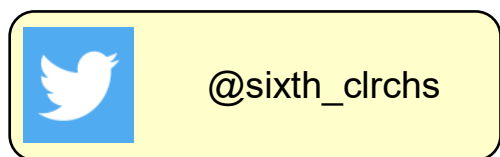
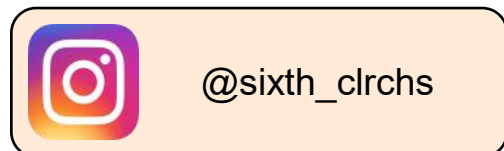
Mr Duncan Gillespie (Assistant Head of Sixth Form)



How to Find us...



For updates and news please follow us on Social Media:



'Coming to Sixth Form at Cardinal Langley was the best decision I could have made, and it completely changed my view of what I thought my college experience was going to be. I really enjoyed my time at 6th form and could not have found a better place to have studies my A Levels. The support and guidance that was available throughout was A'*

Cardinal Langley RC High School Mission Statement

I have come that they may have life and have it to the full. John 10:10

Living the values of:
love, respect,
forgiveness,
compassion, honesty,
fairness and
responsibility, so that
all feel safe and
valued.

Promoting high
expectations and
excellence in academic
achievement and in
everything we do; we
see it as our duty to
care and support one
another.

Striving to recognise,
value and respect to
the needs of all so that
they may take their
place in modern society,
acting justly, loving
tenderly and valuing
humanity with God.

Inspiring others with
the love of God so
that in the world
there will be peace
that is rooted in
our mission.

Developing
spiritual skills
and attitudes
for a life of
faith and hope.

Business Studies

Cardinal Langley RC Sixth Form

Rochdale Road, Middleton, Manchester, M24 2GL

Tel: 0161 643 4009

Email: sixth@clrchs.co.uk

Web: www.sixth.clrchs.co.uk/home



"I have come that they may have life to the full" - John 10:10